

LLOYDS METALS

www.lloydsengg.in

Corporate Office

- 📍 A2, 2nd Floor, Madhu Estate, Pandurang Budhkar Marg, Lower Parel, Mumbai - 400 013, Maharashtra, INDIA.
- 📧 sggangishetti@lloyds.in, svnagraj@lloyds.in, infoengg@lloyds.in,
- ☎ 91-22-6291 8111

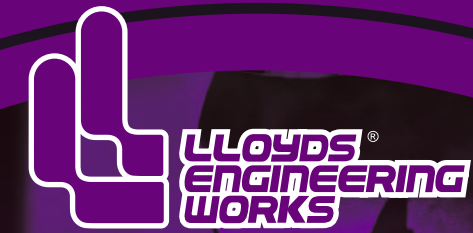
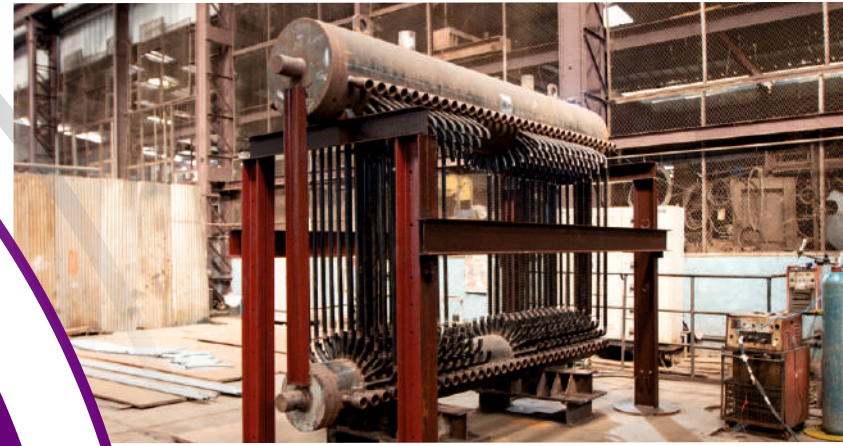
Factory & Registered office

- 📍 Plot no. A 5/4, A5/5 & 6/3 MIDC Industrial Area, Murbad, Dist. Thane - 421401, Maharashtra, India
- 📍 Plot no. K-3, Additional MIDC, Murbad Area, Kudavali, Dist. Thane - 421401, Maharashtra, India
- 📧 infoengg@lloyds.in
- ☎ 91-2524222271/ 9545654196,

Boilers
Hydrocarbon
Power Plant
Loading/Unloading Arms
Navy
Construction Contracting Division
Mineral Processing Plants
Iron and Steel Making Plants



- Process Columns
- Pressure Vessels / Reactors
- Heat Exchangers
- Waste Heat Recovery Boilers
- Marine, Truck & Wagon Loading / Unloading Arms
- Skid Mounted Dryers for Air, Liquid & Gas
- Steel Plant Equipment & Machinery
- Steering Gear & Stabilisers for Indian Naval ships
- Turnkey projects in the field of Hydro carbon, Power and Steel Plant



HISTORY OF INCORPORATION OF LLOYDS GROUP OF COMPANIES

