

Boilers
 Hydrocarbon
 Power Plant
 Loading/Unloading Arms
 Navy
 Construction Contracting Division
 Mineral Processing Plants
 Iron and Steel Making Plants



Corporate Office

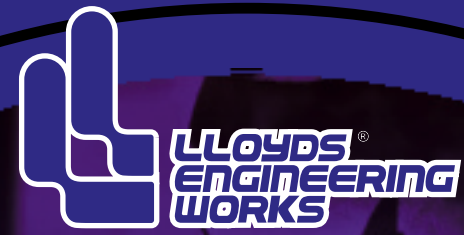
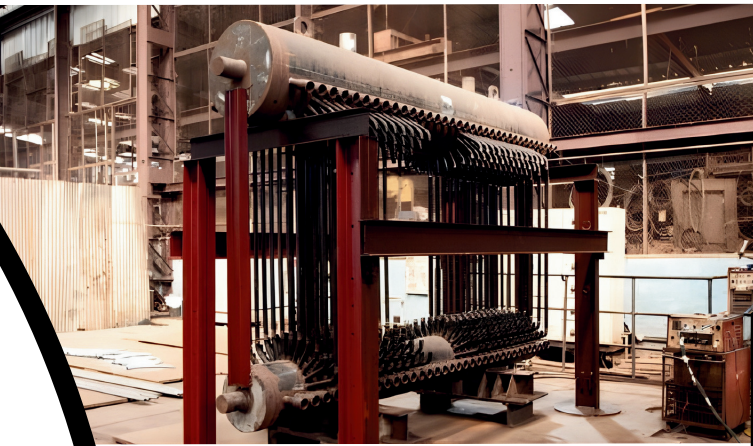
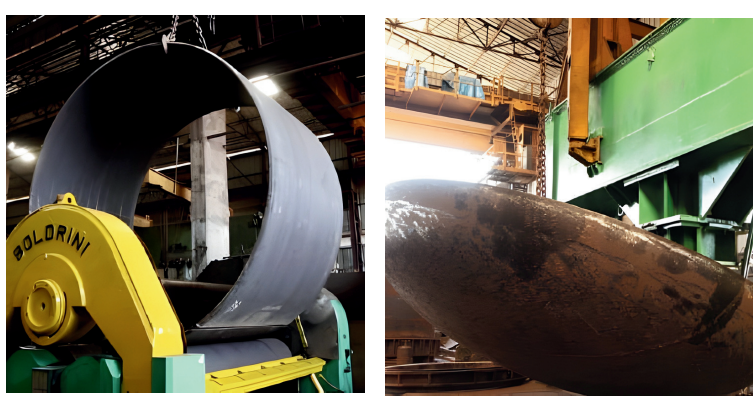
- Location pin: A-2, 2nd floor, Madhu Estate, Pandurang Budhkar Marg, Lower Parel, Mumbai - 400013, Maharashtra, INDIA
- Email: kislaya.kushagra@lloyds.in, harikrishnan.nair@lloyds.in, svnagraj@lloyds.in, infoengg@lloyds.in
- Phone: 91-22-6291 8111

Factory & Registered Office

- Location pin: Plot no. A5/4, A5/5 & 6/3 MIDC Industrial Area, Murbad, Dist. Thane - 421401, Maharashtra, INDIA
- Location pin: Plot no. K-3, Additional MIDC, Murbad Area, Kudavali, Dist. Thane - 421401, Maharashtra, INDIA
- Email: infoengg@lloyds.in
- Phone: 91-2524222271 / 9545654196



- Process Columns
- Pressure Vessels / Reactors
- Heat Exchangers
- Waste Heat Recovery Boilers
- Marine, Truck & Wagon Loading / Unloading Arms
- Skid Mounted Dryers for Air, Liquid & Gas
- Steel Plant Equipment & Machinery
- Steering Gear & Stabilisers for Indian Naval ships
- Turnkey projects in the field of Hydro carbon, Power and Steel Plant



HISTORY OF INCORPORATION OF LLOYDS GROUP OF COMPANIES

